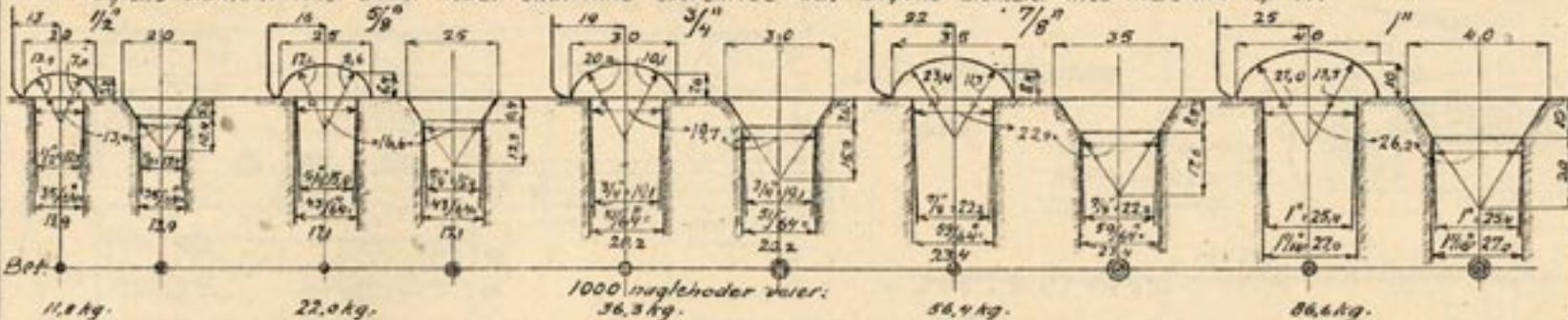


NORMALER FOR NAGLER, UNDERLAGSSKIVER FOR SKRUE I TRÆ SAMT PAKKERINGER.

Nagler. $M=1:2$.

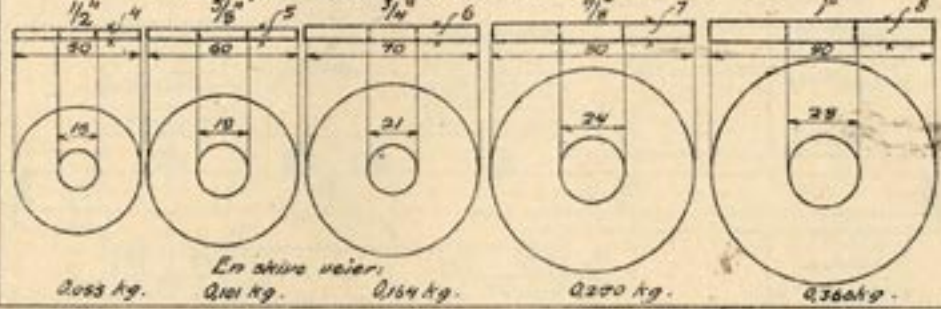
Naglene diameter lige under hovedet skal ikke overskride den angivne diameter med mere end $0,1\text{ mm}$.



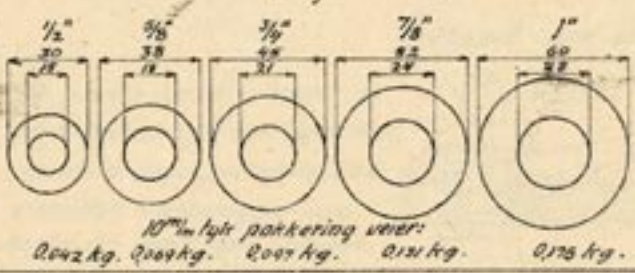
Ny nagletabel. i mm .

Diameter	Langs søg	Tilfølg for 2 ^{de} hode	Tilfølg for fersktræ
26	25 - 40	31	21
	41 - 65	35	23
	66 - 90	35	25
	91 - 120	37	27
25	20 - 40	30	20
	41 - 50	32	22
	51 - 70	32	23
	71 - 90	33	25
20	15 - 25	28	17
	26 - 40	28	18
	41 - 50	30	20
	51 - 80	32	22
16	10 - 25	26	16
	26 - 40	26	17
	41 - 50	28	19
	51 - 65	28	20
13	10 - 30	20	13
	21 - 35	22	15
	36 - 50	24	17
	51 - 70	24	17
10	5 - 15	15	11
	16 - 25	17	13
	26 - 40	18	14

Underlagsskiver for skrue i træ. $M=1/3$



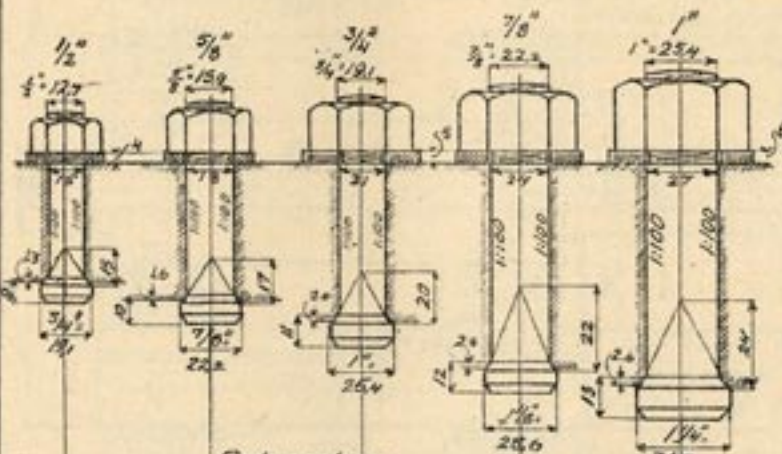
Pakkeringer. $M=1/3$



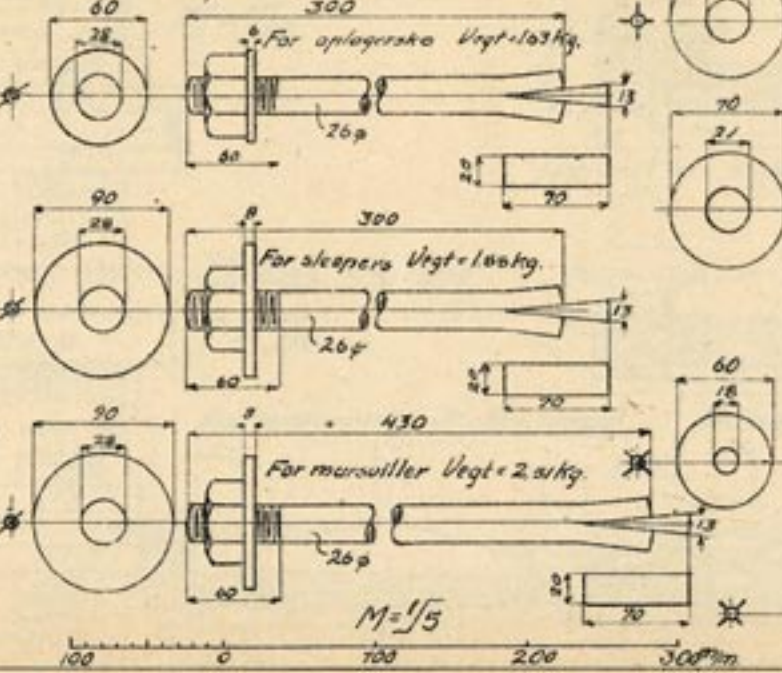
Monteringsnagler = $l = \frac{4}{3}d + \frac{1}{10}l$
Maal i mm og eng. tommer. Sp.v. 78

Koniske bolter. $M=1/3$.

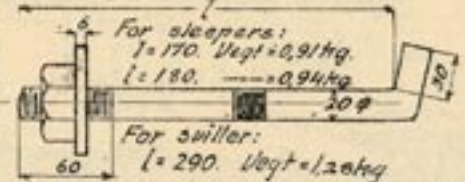
NORMALER FOR BOLTER.



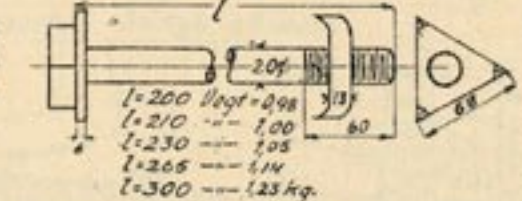
Splintbolter $M=1/5$.



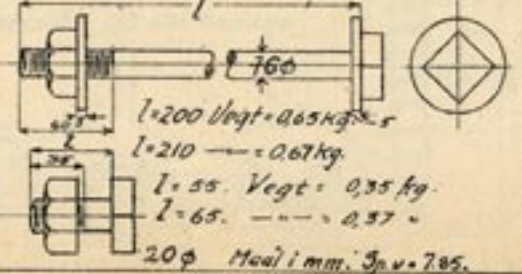
Hakebolter $M=1/5$



Skrubolt med klomutter $M=1/5$



Skrubolter $M=1/5$.



Betegnelse:
Hode, opgjængt ende, stopskive og skrue veier: 0,14 kg
0,24 kg
0,38 kg
0,55 kg
0,75 kg
Sp.v. 78
Heller for koniske bolter skal oppbroses saaledes at der ved forholdsvis løst isat bolt blir en avstand mellom hode og gods paa tocm. Tilslut drives boltene godt ind.
 $M=1/3$.

