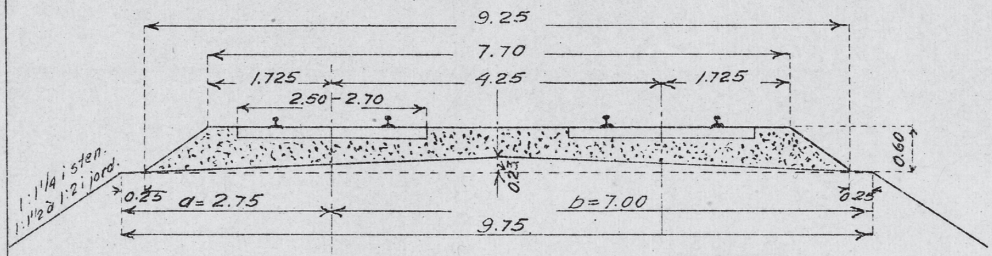


NORMALPROFILER FOR BREDSPORTE BANER KLI DOBBELT SPOR.

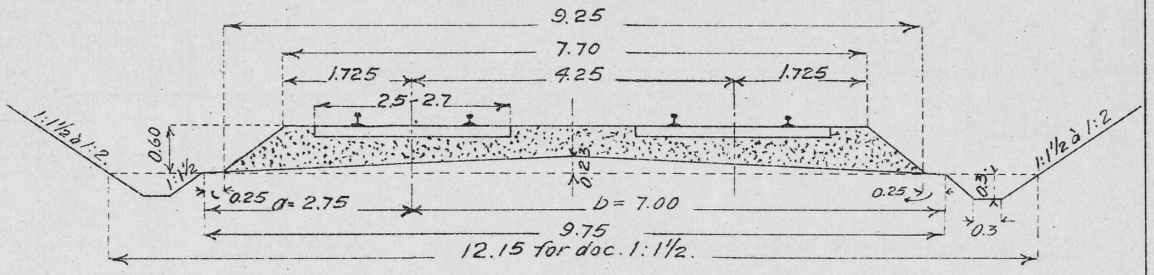
Fylding i retlinie.

1) Grusbballast.

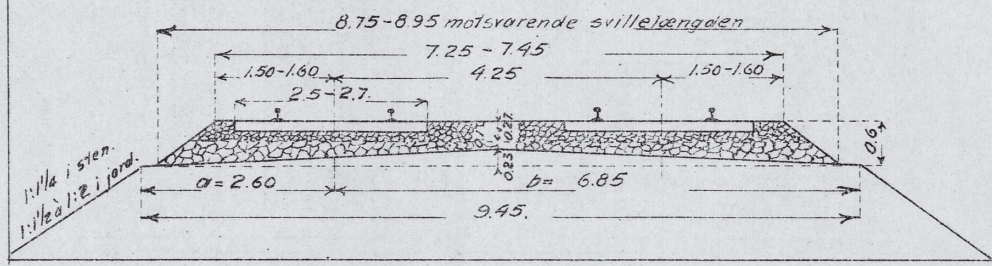


Skjæring i jord i retlinie.

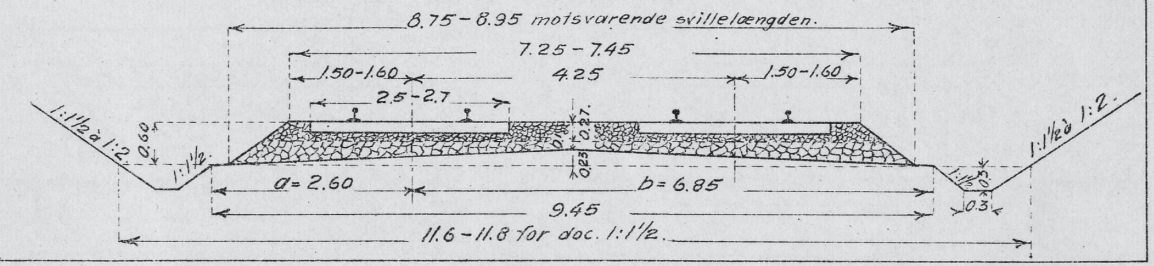
1) Grusbballast.



2) Pukballast.

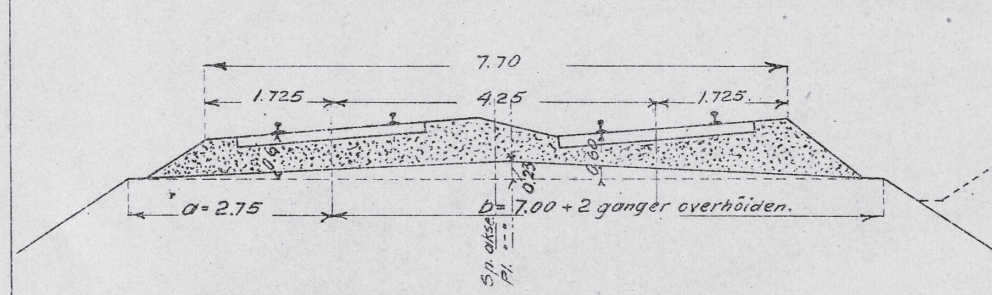


2) Pukballast.



Fylding og jordskjæring i kurver.

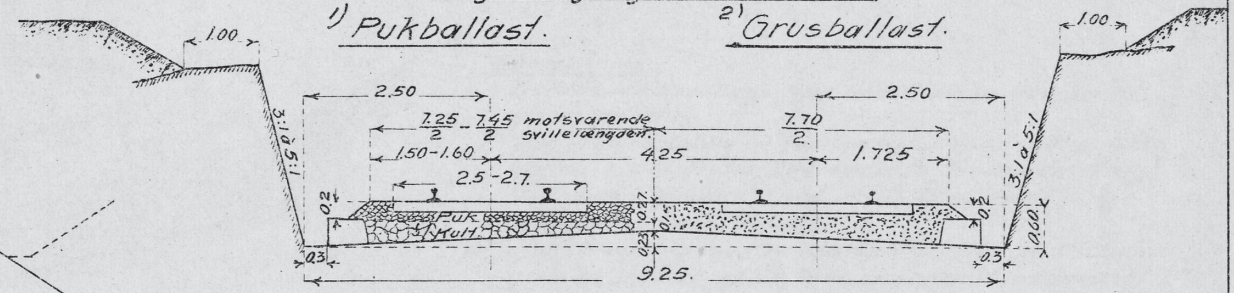
1) Grusbballast.



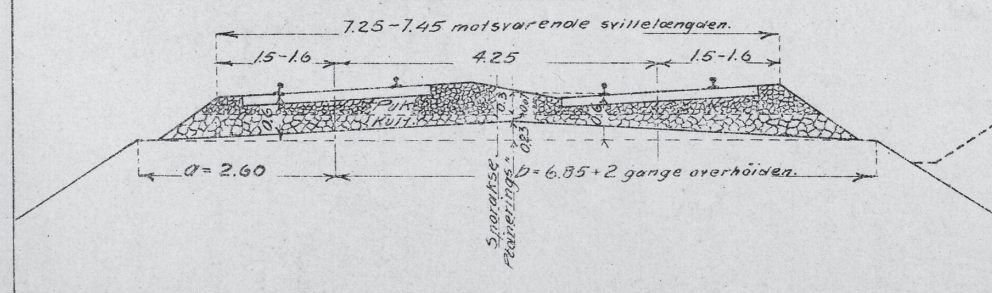
Skjæring i fjeld i retlinie.

1) Pukballast.

2) Grusbballast.



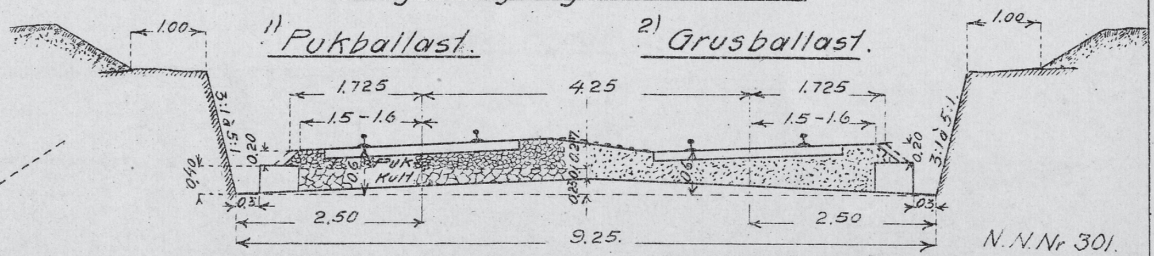
2) Pukballast.



Skjæring i fjeld i kurver.

1) Pukballast.

2) Grusbballast.



Anm.
I fjeldskjæring er planeringsbredden den samme saavel i kurver som i retlinie. I kurver med overhøide forhøies ballastmuren paa Kurvens ytter- side, saaledes at dens overkant overalt blir liggende 0.2 under ballastkant.