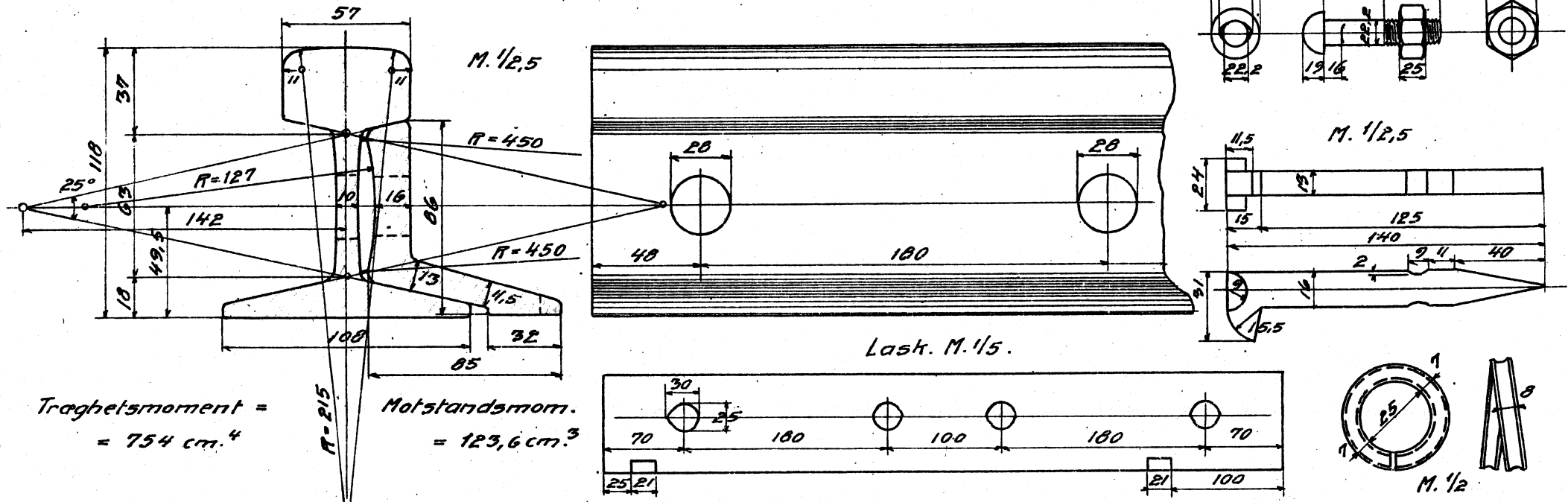
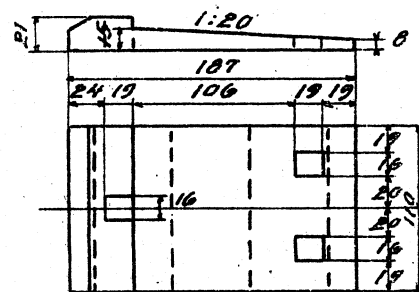
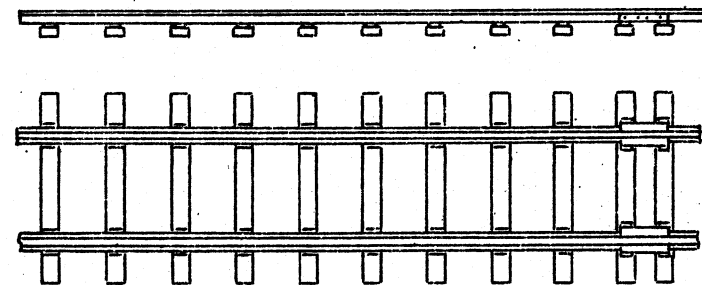
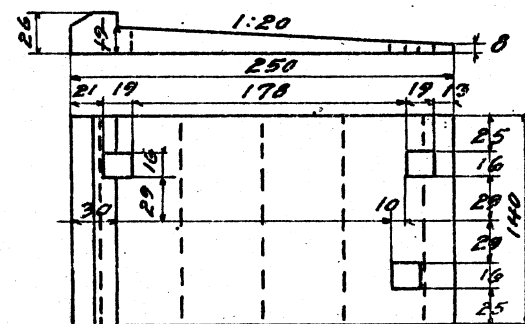




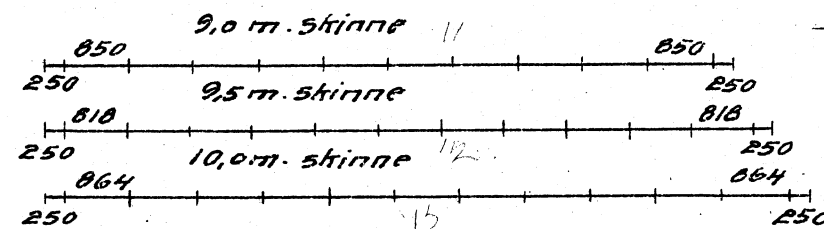
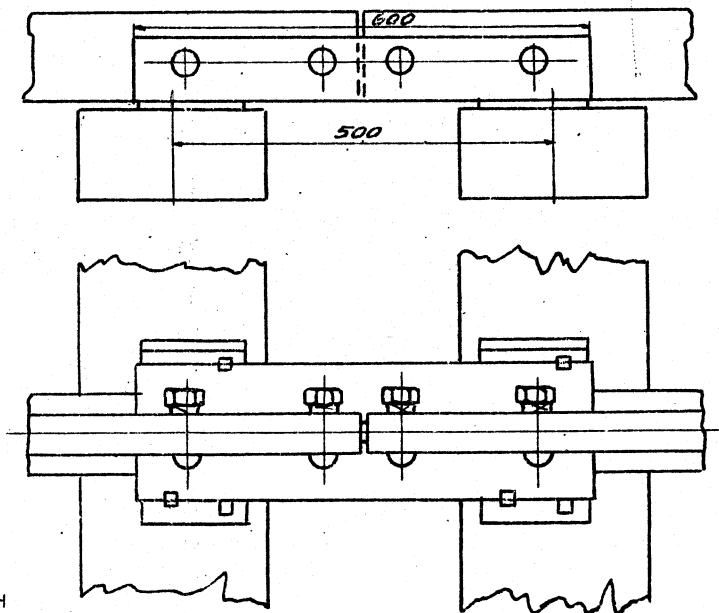


## OVERBYGNING FOR 30 KG. SKINNER.

## DOGSYSTEM.

Ued mellemsviller.  $M. 1/5$ Ued skjotsviller.  $M. 1/5$ 

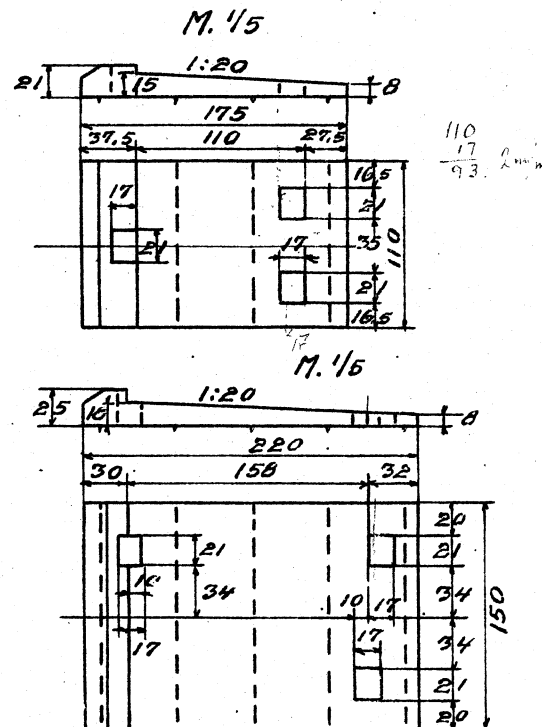
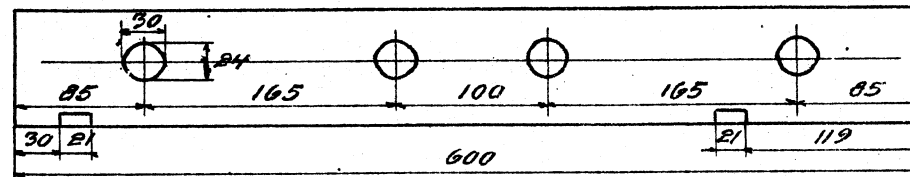
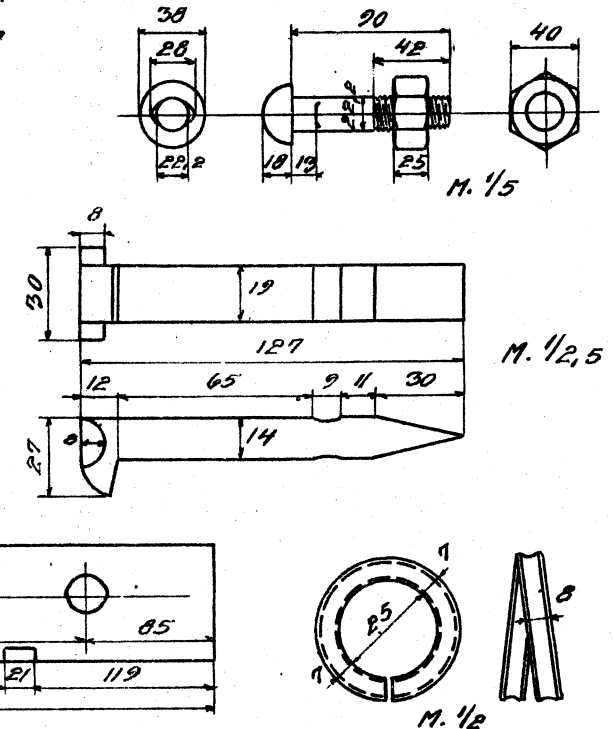
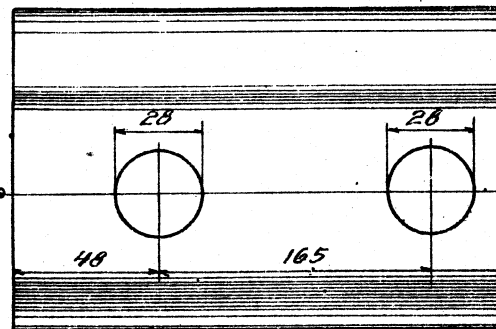
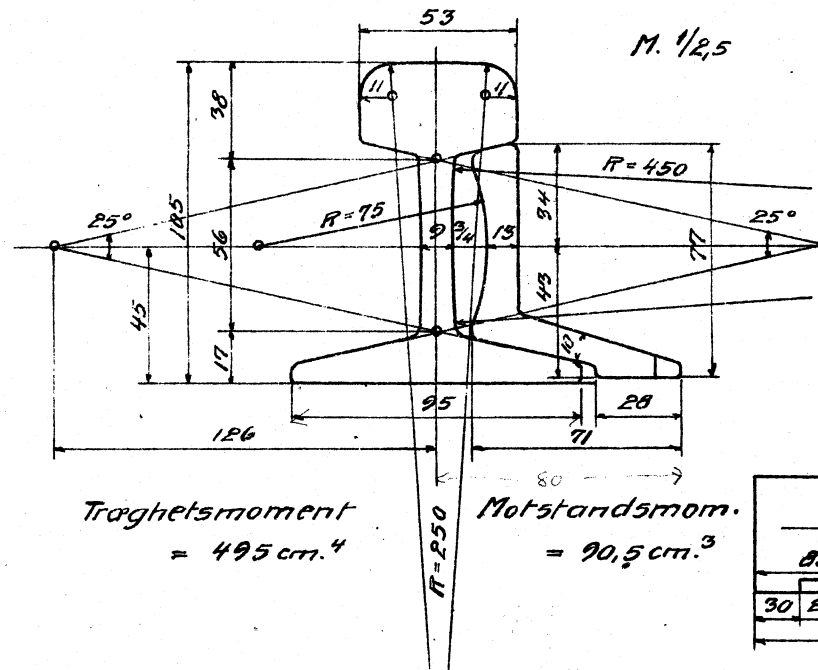
## Sviller: 250 · 250 · 120.

Svillerinddeling  $M. 1/100$ .Skjöt  $M. 1/10$ Efter N.N.N<sup>o</sup> 180

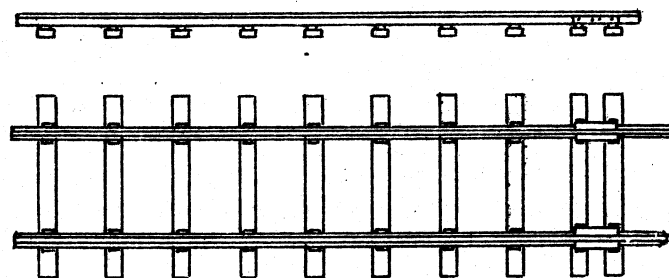


# OVERBYGNING FOR 25 KG. SKINNER.

Anm. Tegningen er gennemført for bredt spor. For smalt spor skiller den sig kun i sville dimension.

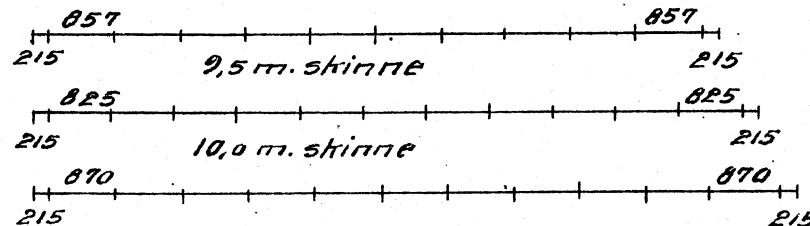


Bredt spor Smalt spor  
Sviller: 2400·230·110, 2000·220·110



Svillinddeling M. 1/100

9,0 m. skinne



Skjöt M. 1/10

